

# BANKRUPTCY AUCTION

(Subject to Bankruptcy Court Approval)

**Bid Deadline: September 24 \* Auction: September 30**

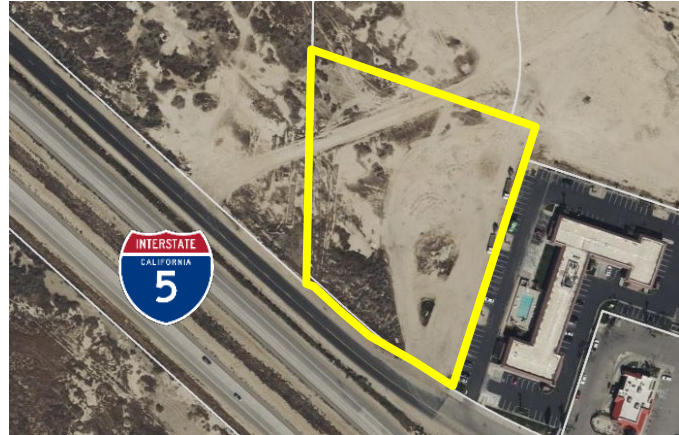
## TRUCKING TERMINAL & VACANT LAND EASY ACCESS TO MAJOR INTERSTATES



### 14765 VALLEY BLVD FONTANA, CA

Truck/Repair Terminal

- 10,386 SF Facility with 5 Truck Bays & 61 Spaces on 1.64 acres
- M-1 Light Industrial
- Easy access to I-10



### 20634 TRACY AVE BUTTONWILLOW, CA

Vacant Land – Trucking Hub

- 3.08 Acres of Immediately off I-5
- Area includes fuel stops, hotels & quick serve restaurants outside Bakersfield

## Additional KAL Freight Property Available For Sale:

### 15 FRONTAGE ROAD, HAMPTON (UNION TWP), NJ

**TRUCK/REPAIR TERMINAL:** 28,148 +/- SF, 12.07 acres, 46 dock-high doors, 6 drive-in ground level doors with Office, Service Garage and Apartment  
**FRONTING INTERSTATE-78:** Connecting to Newark (45 miles), New York City (55 miles), and the PA/NJ state border (14 miles)

**Additional Information – [www.KALFreightRealEstate.com](http://www.KALFreightRealEstate.com)**



**KEEN-SUMMIT CAPITAL PARTNERS LLC**  
646-381-9222 Main | [www.Keen-Summit.com](http://www.Keen-Summit.com)

**Disclaimer:** All information is from the Client and/or other sources deemed reliable and has not been independently verified. No representation, warranty or guarantee, expressed or implied or by operation of law, is made as to the accuracy, reliability, or completeness of this information. This material is submitted subject to errors, omissions, changes, prior sales, or withdrawals without notice. All transactions are subject to Bankruptcy Court Approval.