

BANKRUPTCY AUCTION



Exclusive Beverly Hills Development Site

In the Guard-Gated Bella Vista Estates.

◆ 2451 Summitridge Drive,
Beverly Hills, CA 90210



PLANNED ESTATE FEATURES

25,569 sq. ft.

TOTAL GROSS SQUARE FEET

3.2 acres

ATOP VALLEY VIEWS

5

BEDROOMS

8

FULL BATHS

7

HALF BATHS

2

GUEST/STAFF
SUITES



◆ SALE DETAILS

Bid Deadline: September 16, 2025

Auction: September 23, 2025.

Stalking-horse offers encouraged.



CONTACT INFORMATION:

Keen-Summit Capital Partners LLC,
646-381-9222

Keen-SummitRidgeBeverlyHills.com

CONSTRUCTION STATUS:

Grading and temporary pre foundation support already in progress.

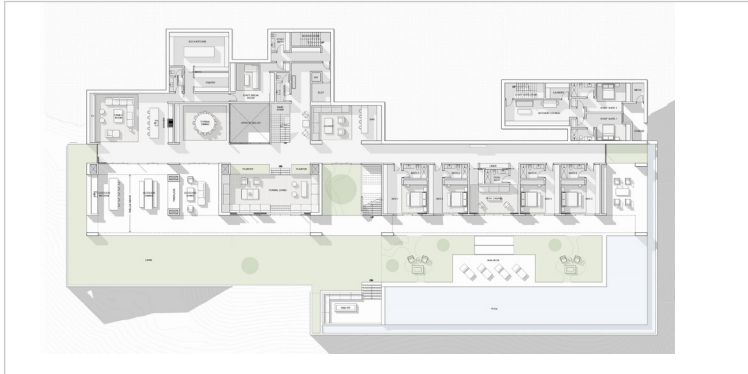
LOCATION HIGHLIGHTS:

Privacy, security, and stunning views.
Close to Beverly Hills & Sunset Strip lifestyle destinations.

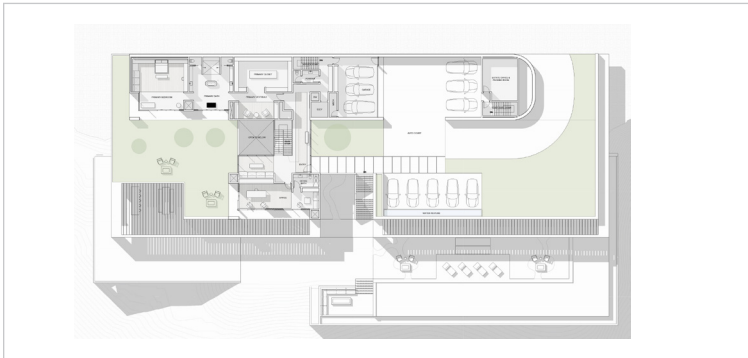


ADDITIONAL DETAILS

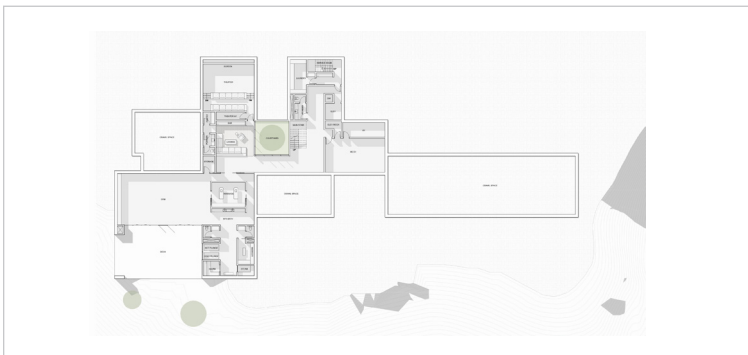
- ~ Sprawling sundeck
- ~ Wrap around pool with cabana
- ~ Private home theater
- ~ Professional grade gym & spa
- ~ 11 car garage
- ~ Full elevator



MAIN LEVEL



UPPER LEVEL



BASEMENT LEVEL

