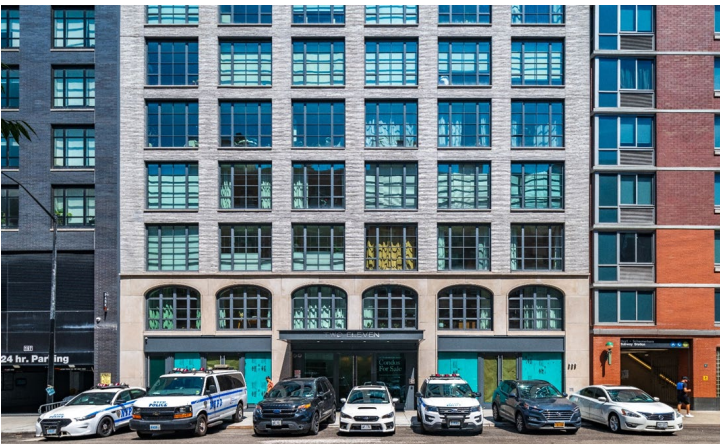


FOR SALE

Ground Floor Commercial Condo

Downtown Brooklyn



211 Schermerhorn St, Brooklyn, NY

Between Hoyt and Bond St

Property Overview

Ground Floor : 5,681 SF
Lower Level: 3,423 SF
Frontage: 42+' of combined frontage

- Vacant Commercial Condo
- At the base of a recently built 48-unit boutique condo building
- Elevator dedicated to commercial space
- 2 Storefronts on either side of Building entrance
- ICAP Tax Abatement – 25 year
- Air Rights Available

Area Highlights

- Adjacent to Hoyt-Schermerhorn Station servicing the A, C, and G lines
- Over 18,000 residential units under development within a ½ mile
- Other retailers nearby:
 - Trader Joe's
 - Whole Foods
 - Starbucks
 - Ace Hotel

Additional Information – www.Keen-Summit.com/Current-Opportunities



646-381-9222 | www.Keen-Summit.com

Disclaimer: All information is from the Client and/or other sources deemed reliable and has not been independently verified. No representation, warranty or guarantee, expressed or implied or by operation of law, is made as to the accuracy, reliability, or completeness of this information. This material is submitted subject to errors, omissions, changes, prior sales, or withdrawals without notice. All transactions are subject to Bankruptcy Court Approval.