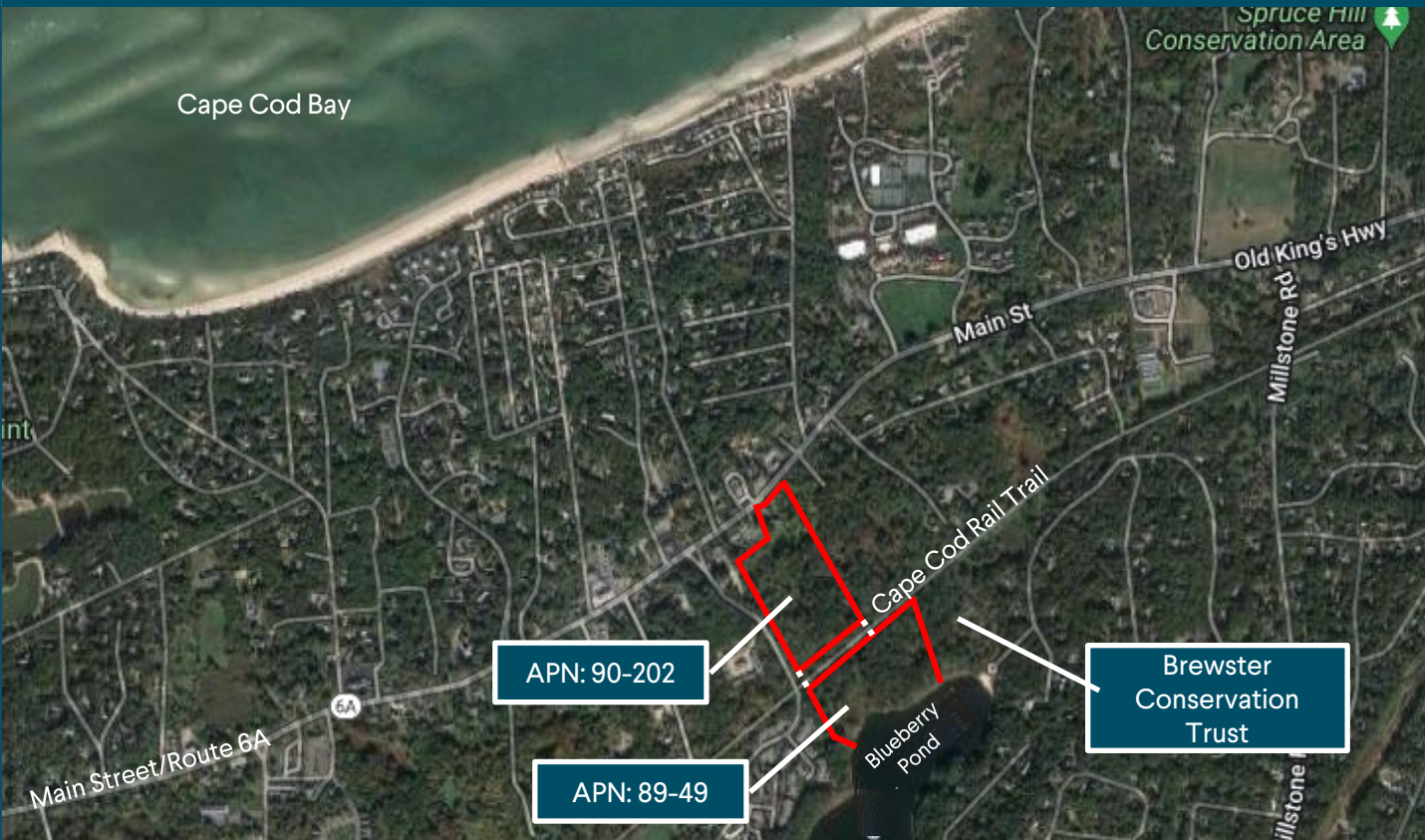


# For Sale: Waterfront Single Family Home & Development Site on Cape Cod



## PROPERTY HIGHLIGHTS INCLUDE:

- Two adjacent parcels totaling 17.42 Acres
  - » 2750 Main Street, Brewster, MA  
5 Bd, 2 Ba, 2,707sq. ft. Cape style SFR on 9.62 acres
  - » 0 Blueberry Pond Dr, Brewster, MA (Land), 7.8 undeveloped acres with frontage on Blueberry Pond
- Access to the Cape Cod Rail Trail!

½ MILE WALK TO  
ELLIS LANDING BEACH

4 MINUTE DRIVE TO  
OCEAN EDGE GOLF COURSE

RESIDENTIAL DEVELOPMENT  
OPPORTUNITY

ADJACENT PARCELS MAY BE  
AVAILABLE FOR SALE

For More Information Visit: [www.Keen-Summit.com](http://www.Keen-Summit.com)



Exclusive Real Estate Advisor

Keen-Summit Capital Partners LLC  
646.381.9222

Matthew Bordwin / MA License #145359