

FOR SALE: 3.21 Acre Parcel

4381 Winkler Ave, Ft Myers, FL

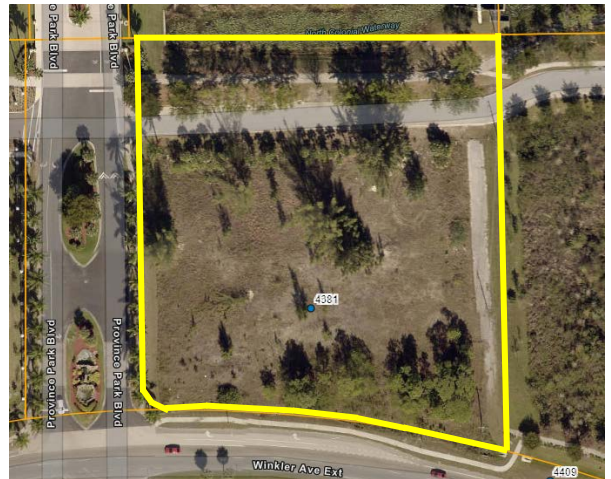


4381 Winkler Ave, Ft Myers, FL

Land: 3.21 Acres Zoning: CG, General Commercial Frontage: 351' on Winkler Ave

AREA HIGHLIGHTS:

- » Easy Access to I-75
- » Adjacent to the Hodges University, Fort Myers Campus
- » Area attractions include: Johns Hopkins All Children's Outpatient Care; Colonial Outpatient Surgery Center; Head & Neck Surgical Cancer Specialist of SW Florida; WoodSpring Suites; Colonial Center Shopping Center; Eastwood Golf Course and several apartment complexes



Property Lines are Approximations

Additional Information Available at IPCNaples.com and Keen-Summit.com



239-261-3400 IPCNaples.com



Special Real Estate Advisor

646-381-9222 Keen-Summit.com

Disclaimer: All information is from the Client and/or other sources deemed reliable and has not been independently verified. No representation, warranty or guarantee, expressed or implied or by operation of law, is made as to the accuracy, reliability, or completeness of this information. This material is submitted subject to errors, omissions, changes, prior sales, or withdrawals without notice. A buyer's broker, if any, is only protected if its representation is confirmed, in writing, in the buyer's offer.